



Jupiter

self managing public toilet series

more than just a convenience



tilled interior with recessed accessories

Jupiter

At Exeloo we believe in looking to the future and have developed the Jupiter series of self managing public toilet units to meet the ever changing challenges of today's society. The innovative design and structure provide excellent flexibility based around the large floor plate and duragal steel framing. A choice of roof designs, internal and external cladding finishes, plus an extensive range of accessory options allow the units to be custom designed to enhance most surrounding environments.

The Jupiter range is available in single, twin and triple formats with all providing outstanding durability and hygienic, easy clean environments that meet compliance code requirements. The units are easily installed, fully re-locatable, contain no timber in the construction and are manufactured in our purpose built factory. We have been producing self managing public toilet units since 1992.

The sustainable design of the Jupiter series allows integration with the latest technologies that can improve water and power efficiency, reducing their carbon footprint. Options include photovoltaic panels (solar panels to generate electricity), rainwater harvesting, black water onsite treatment and recycling, water efficient toilet pans and flushing systems. Extensive use of stainless steel in most accessories and components also ensures any future needs for recycling are catered for.

The latest technological advances at Exeloo provide the capability for a web based remote monitoring system to be integrated into the automated versions that enables instant access to extensive data including number of occupations, water usage, power consumption, programmable time settings and provide solutions to troubleshooting.

The Exeloo vision is to manufacture public toilet facilities that provide the highest standard of hygiene and safety for users, meet the needs of the disabled and discourage loitering and vandalism.



the Jupiter range is available in single, twin, and triple formats



top: example of graphics available bottom: compressed sheet finish

Jupiter Structure

Floor A precast reinforced concrete floor which falls to a built in floor drain allows easy installation on simple foundation pads.

Wall frame Exterior wall and roof frames are made of supagal steel to ensure strength when the unit is transported and to provide a long service life.

Cladding The supagal steel frame allows the exterior to be clad with a variety of materials. The standard finish is decorative stainless steel on a backing substrate. Brushed stainless steel panels, coloured enamel panels, or linear weatherboards can also be used to provide a custom finish.

Roof Choices of roof designs available include a curved or skillion style with Coloursteel/Colourbond finish.

Doors The stainless steel sliding cavity doors with a rigid aluminium frame are a main feature and benefit. The concealed magnetic locking system provides the ability to program the unit to lock and unlock at preset times (where power is available). They are also extremely resilient and enhance the aesthetic appearance of the toilet unit.

Interior wall linings Large durable ceramic tiles are standard with porcelain on steel panels providing a resilient, long lasting surface resistant to most forms of vandalism and graffiti available as an option.

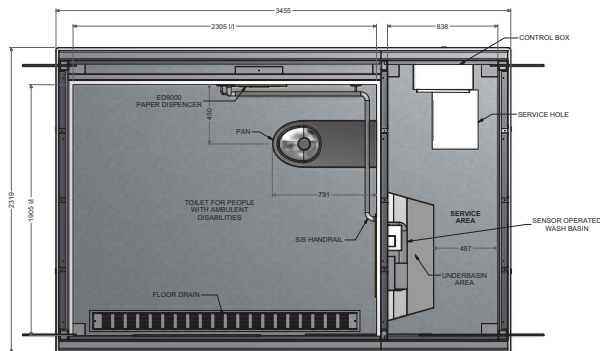
Floor surfacing The floor is surfaced with non-slip ceramic tiles and moisture resistant grout.

Signage Vandal resistant Braille signs and indicator lights show the status of the unit and provide operating instructions.

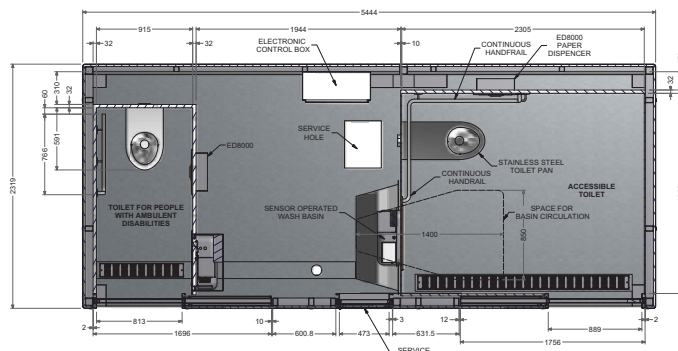
Concealed operating components All control devices, wiring and plumbing services are concealed in the service area of the unit reducing clutter and ensuring that they cannot be tampered with or damaged.

Accessories An extensive range of accessories are available including a recessed stainless steel sensor operated basin, jumbo roll electronic paper dispenser, electronic door operation, touch free sensor switches and wash down system. These are available as options depending on the model and specification chosen.

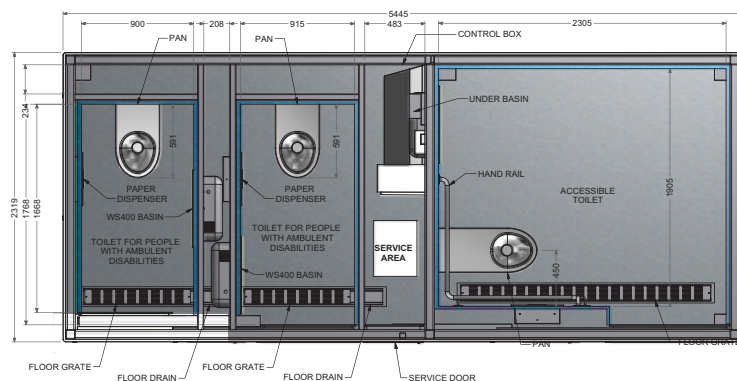
Contact us to discuss your specific design requirements.



Model 21 - Jupiter Super Single Cyclone Auto



Model 22 - Jupiter Super Twin Auto



Model 23 - Jupiter Super Triple Auto

Features Summary

- A safe, hygienic and welcoming environment for users
- Multiple safety systems
- Vandal resistant fixtures and surfaces
- Access and facilities for people with disabilities
- Automatic daily locking and unlocking
- Simple installation and relocation if required
- Statistics on usage provided through touch screen display
- Internal and external cladding options
- Choice of roof design
- Music and voice messages
- Fixed occupation time
- Stainless steel accessories
- Cavity sliding door operation
- Status indicator light panel
- Sustainable design

Optional Features

- Web based remote monitoring
- Automatic doors
- Manually operated doors with magnetic locks
- Manually operated doors with mechanical locks
- Wash down cycle
- Touch free sensor switches
- Recessed electronic sensor operated basin unit
- Recessed electronic jumbo paper dispenser
- Recessed sanitary disposal
- No touch toilet flushing
- Toilet seat wash system
- Variable settings
- Sharps disposal
- Hearing impaired indicator
- Baby change table
- Coin or card operation
- Movement sensor

New Zealand

Exeloo Ltd
tel: 0800 EXELOO (0800 393 566)
tel: 64 9 838 8912
email: info@exeloo.com
web: www.exeloo.com

Australia - VIC, ACT, SA, TAS, WA

WC Innovations
tel: 1300exeloo (1300 393 566)
email: sales@wcinnovations.com.au
web: www.wcinnovations.com.au

Australia - NSW, NT, QLD

Exeloo Pty Ltd
tel: 1800 501 069
email: sales@exeloo.com.au
web: www.exeloo.com.au

USA

Public Facilities & Services Inc
tel: 1 800 303 3506
email: contact@exeloo.com
web: www.exeloo.com

exeloo®

www.exeloo.com